



POLLINATOR GARDEN DESIGN GUIDE

**APPENDICES**



## Appendix 1: Plant List for Georgia's Piedmont Ecoregion

### TREES

Scientific Name	Common Name	Sun	Water Use	H x W	Bloom Time, Shape, Color	Seasonality	Wildlife
<i>Asminia triloba</i>	Pawpaw	Part shade-shade	Medium	15' x 15'	Apr-May Bowl Red-purple	Deciduous	Host plant for Zebra Swallowtail
<i>Cercis canadensis</i>	Eastern Redbud	Part shade-part sun	Low	20' x 25'	Mar-Apr Lipped Pink	Deciduous	Bees, edible flowers
<i>Cornus florida</i>	Dogwood	Part shade-part sun	Low	20' x 20'	Mar-May Flat White	Deciduous	Host plant for the Spring Azure
<i>Diospyros virginiana</i>	American persimmon	Part shade-sun	Low	35' x 25'	May-June Bowl Yellow	Deciduous	Bees, mammals
<i>Hamaelis virginiana</i>	American witchhazel	Shade-sun	Medium	20' x 15'	Oct-Dec Composite Yellow	Deciduous	Bees, butterflies
<i>Ilex vomitoria</i>	Yaupon	Shade-sun	Low	12' x 8'	Apr-May Clusters, flat White	Evergreen	Birds, butterflies
<i>Liriodendron tulipifera</i>	Tulip tree	Shade-sun	Medium	80' x 50'	Apr-May Bowl Yellow, green	Deciduous	Host plant for Eastern Tiger Swallowtail
<i>Magnolia virginiana</i>	Sweet bay magnolia	Part shade	Medium-High	25' x 25'	Apr-July Bowl White	Evergreen	Moths, beetles, birds
<i>Prunus serotina</i>	Black cherry	Shade-sun	Medium	60' x 40'	Mar-May Flat, clusters White	Deciduous	Bees
<i>Ptelea trifoliata</i>	Hoptree	Shade-sun	Low-High	15' x 10'	Mar-June Composite White	Deciduous	Host plant for Eastern Tiger Swallowtail and Giant Swallowtail
<i>Zanthoxylum clava-herculis</i>	Hercules club	Sun	Medium	20' x 12'	Apr-May Clusters White	Deciduous	Host plant for Giant Swallowtail

## SHRUBS

Scientific Name	Common Name	Sun	Water Use	H x W	Bloom Time, Shape, Color	Seasonality	Wildlife
<i>Aesculus parviflora</i>	Bottlebrush buckeye	Part shade	Medium-High	12' x 12'	June-July Clusters Red	Deciduous	Hummingbirds, butterflies
<i>Callicarpa americana</i>	American beautyberry	Part shade	Low	5' x 5'	May-July Clusters White, pink	Deciduous	Birds, butterflies
<i>Cephalanthus occidentalis</i>	Buttonbush	Part shade-shade	High	8' x 8'	June-Sept Composite White	Deciduous	Great nectar source for insects
<i>Clethra alnifolia</i>	Sweet pepperbush	Shade-sun	High	4' x 4'	July-Aug Trumpet White	Deciduous	Bees, butterflies, hummingbirds, mammals
<i>Clinopodium georgiana</i>	Georgia calamint	Part shade-sun	Low	2' x 2'	July-Oct Lipped Purple	Evergreen	Bees
<i>Conradina canescens</i>	False rosemary	Part shade-sun	Low	2' x 3'	July-Oct Lipped Purple	Evergreen	Bees
<i>Illicium floridanum</i>	Florida anisetree	Part shade	High	8' x 8'	Mar-June Composite Red-purple	Evergreen	Nectar for insects
<i>Ilex verticillata</i>	Winterberry	Shade-sun	High	10' x 6'	Apr-June Flat, clusters White	Deciduous	Honey bees
<i>Ilex vomitoria var. nana</i>	Dwarf yaupon	Shade-sun	Low	4' x 4'	Apr-May Flat, clusters White	Evergreen	Birds, butterflies
<i>Itea virginica</i>	Virginia sweetspire	Part shade	High	5' x 5'	Mar-June Composite White	Deciduous	Nectar for insects
<i>Lindera benzoin</i>	Spicebush	Shade-sun	Medium	12' x 8'	Mar-May Composite Yellow	Deciduous	Host plant for Eastern Tiger Swallowtail, Spicebush Swallowtail
<i>Morella cerifera</i>	Wax myrtle	Part shade-sun	High	8' x 8'	Feb-May Clusters, bowl White	Evergreen	Birds, Host plant for Red-Banded Hairstreak
<i>Vaccinium darrowii</i>	Darrow's blueberry	Part shade	High	2' x 2'	Jan-Apr Bell White	Evergreen	Bees, birds
<i>Vaccinium myrsinites</i>	Shiny blueberry	Part shade-sun	Medium	2' x 2'	Jan-Apr Bell White	Evergreen	Bees, birds
<i>Vaccinium virgatum</i>	Rabbiteye blueberry	Part shade-sun	Medium	8' x 6'	Jan-Apr Bell White	Deciduous	Bees, butterflies, birds, mammals

**Appendix 1**  
**Plant List for Georgia's Piedmont Ecoregion**

**PERENNIALS**

<b>Scientific Name</b>	<b>Common Name</b>	<b>Sun</b>	<b>Water Use</b>	<b>H x W</b>	<b>Bloom Time, Shape, Color</b>	<b>Seasonality</b>	<b>Wildlife</b>
<i>Asclepias incarnata</i>	Swamp milkweed	Part shade-sun	Medium-High	5' x 3'	July-Sept Clusters Pink	Deciduous perennial	Host plant for monarch
<i>Asclepias tuberosa</i>	Butterfly milkweed	Sun	Low-Medium	2' x 2'	June-Aug Clusters Orange	Deciduous perennial	Host plant for monarch
<i>Baptisia alba</i>	White wild indigo	Part sun-sun	Low-Medium	3' x 3'	Mar-May Lipped, closed White	Deciduous perennial	Nectar for butterflies and bees
<i>Coreopsis lanceolata</i>	Lanceleaf coreopsis	Sun	Low	2' x 2'	Apr-July Flat, composite Orange	Deciduous perennial	Nectar for butterflies and bees
<i>Echinacea purpurea</i>	Purple coneflower	Sun	Low	3' x 3'	Apr-Sept Flat, composite Purple, yellow	Deciduous perennial	Nectar for butterflies and bees
<i>Eryngium yuccifolium</i>	Rattlesnake master	Sun	Low-Medium	4' x 3'	May-Sept Round, clusters White	Deciduous perennial	Bees, butterflies
<i>Eutrochium purpureum</i>	Joe-pye weed	Part sun-sun	Low	6' x 3'	July-Sept Clusters Pink	Deciduous perennial	Birds, butterflies
<i>Helianthus angustifolius</i>	Swamp sunflower	Part sun-sun	Medium-High	6' x 4'	Aug-Nov Flat, composite Yellow	Deciduous perennial	Birds, butterflies
<i>Hibiscus coccineus</i>	Scarlet rosemallow	Part sun-sun	High	5' x 3'	July-Sept Bowl Red	Deciduous perennial	Hummingbirds, moths, butterflies
<i>Liatriis spiacata</i>	Gayfeather	Sun	Medium	3' x 5'	July-Sept Tubular, clusters Purple	Deciduous perennial	Hummingbirds, bees, butterflies
<i>Monarda fistulosa</i>	Wild bergamot	Part sun-sun	Low-Medium	3' x 3'	May-Sept Tubular, lipped Pink-purple	Deciduous perennial	Bees, hummingbirds, butterflies
<i>Monarda punctata</i>	Spotted bee balm	Sun	Low	3' x 3'	May-Sept Tubular, lipped Pink, green, white	Deciduous perennial	Bees, butterflies, hummingbirds

**PERENNIALS (cont'd.)**

Scientific Name	Common Name	Sun	Water Use	H x W	Bloom Time, Shape, Color	Seasonality	Wildlife
<i>Pycnanthemum tenuifolium</i>	Narrowleaf mountain mint	Part sun-sun	Low-Medium	3' x 3'	June-Aug Clusters White	Deciduous perennial	Bees, birds, butterflies
<i>Rudbeckia hirta</i>	Black-eyed Susan	Sun	Low-Medium	3' x 2'	June-Sept Flat, composite Yellow	Deciduous perennial	Bees, birds butterflies
<i>Soldago rugosa</i>	Wrinkle-leaf goldenrod	Sun	Medium-High	4' x 4'	Aug-Oct Clusters Yellow	Deciduous perennial	Bees, birds, butterflies
<i>Symphotrichum georgianum</i>	Georgia aster	Part shade-sun	Low-Medium	3' x 3'	Oct-Nov Flat, composite Purple, yellow	Deciduous perennial	Bees, birds, butterflies
<i>Zizia aurea</i>	Golden alexander	Part sun-sun	Medium	2' x 2'	May-June Clusters Yellow	Deciduous perennial	Host plant for Black Swallowtail

**GRASSES & SEDGES**

Scientific Name	Common Name	Sun	Water Use	H x W	Bloom Time	Seasonality	Wildlife
<i>Andropogon ternarius</i>	Splitbeard bluestem	Part sun-sun	Low	4' x 2'	Fall	Perennial	Seed for birds and mammals
<i>Carex pensylvanica</i>	Pennsylvania sedge	Part shade-part sun	Low-Medium	1' x 2'	Spring-Fall	Perennial	Nesting cover for birds and frogs
<i>Chasmanthium latifolium</i>	Inland sea oats	Part shade-shade	Low	3' x 3'	Fall	Perennial	Seeds for birds
<i>Eragrostis spectabilis</i>	Purple lovegrass	Sun	Low	2' x 2'	Aug-Oct	Perennial	Host plant for paradoxical grass moth, nesting cover for birds
<i>Muhlenbergia rigens</i>	Pink muhly grass	Sun	Low-Medium	3' x 3'	Fall	Perennial	Nesting cover for birds
<i>Panicum virgatum</i>	Switchgrass	Sun	Medium-High	4' x 3'	Fall	Perennial	Birds

## Appendix 1 Plant List for Georgia's Piedmont Ecoregion

### GROUNDCOVERS

Scientific Name	Common Name	Sun	Water Use	H x W	Bloom Time, Shape, Color	Seasonality	Wildlife
<i>Achillea millefolium</i>	Yarrow	Part sun-sun	Low	1' x 1'	May-July Clusters White	Evergreen	Nectar for insects
<i>Chrysogonum virginianum</i>	Green and gold	Part sun-part shade	Low-Medium	1' x 1'	Apr-May, Sept-Oct Flat Yellow	Perennial	Bees, butterflies, birds
<i>Fragaria virginiana</i>	Wild strawberry	Part shade-sun	Low	1' x 1'	Apr-July Flat White	Evergreen (in some areas)	Host plant for gray hairstreak
<i>Mitchella repens</i>	Partridgeberry	Part shade-shade	Low-Medium	1' x 1'	May-Oct Tubular White	Evergreen	Birds and mammals
<i>Phlox divaricata</i>	Eastern blue phlox	Part shade-shade	Medium	1' x 1'	Apr-June Flat Blue	Perennial	Bees, butterflies, hummingbirds
<i>Salvia lyrata</i>	Lyre-leaf sage	Shade-sun	Low	1' x 1'	March-May Lipped Purple	Evergreen (in some areas)	Bees, butterflies, hummingbirds
<i>Sisyrinchium angustifolium</i>	Blue-eyed grass	Sun	Medium-High	1' x 1'	March-May Flat Blue	Evergreen	Bees

### VINES

Scientific Name	Common Name	Sun	Water Use	H x W	Bloom Time, Shape, Color	Seasonality	Wildlife
<i>Aristolochia tomentosa</i>	Woolly Dutchman's pipevine	Part shade-sun	Medium-High	20-30'L	Trumpet Yellow, white, purple	Deciduous	Host plant for Pipevine Swallowtail
<i>Lonicera sempervirens</i>	Coral honeysuckle	Part shade-sun	Medium	3-20'L	March-June Tubular Red	Deciduous	Nectar for insects, hummingbirds
<i>Passiflora incarnata</i>	Purple passionflower, maypop	Part shade-sun	Low-Medium	25'L	May-Sept Flat Purple, white	Deciduous	Host plant for Gulf Fritillary and Zebra Longwing
<i>Passiflora lutea</i>	Yellow passionflower	Shade-part shade	Low	15'L	May-Sept Flat Yellow	Deciduous	Host plant for Gulf Fritillary

## Appendix 2: Plant Identification Cards

*Asimina triloba*  
Pawpaw

[insert image here]

TREE 15' Ht.

ZONES: 5 - 9

SUN-SHADE WATER: MEDIUM

Bloom time: J F M A M J J A S O N D

*Magnolia virginiana*  
Sweetbay magnolia

[insert image here]

TREE 25' Ht.

ZONES: 5 - 9

Pt. SHADE WATER: MED-HIGH

Bloom time: J F M A M J J A S O N D

*Aesculus parviflora*  
Bottlebrush buckeye

[insert image here]

SHRUB 12' Ht.

ZONES: 5 - 9

Pt. SHADE WATER: MED-HIGH

Bloom time: J F M A M J J A S O N D

*Diospyros virginiana*  
American persimmon

[insert image here]

TREE 25' Ht.

ZONES: 4 - 9

PT SHD / SUN WATER: LOW

Bloom time: J F M A M J J A S O N D

*Hamamelis virginiana*  
Witch hazel

[insert image here]

TREE 15' Ht.

ZONES: 3 - 9

SUN-SHADE WATER: MEDIUM

Bloom time: J F M A M J J A S O N D

*Cercis canadensis*  
Eastern redbud

[insert image here]

TREE 20' Ht.

ZONES: 4 - 9

Pt. SHADE - SUN WATER: LOW

Bloom time: J F M A M J J A S O N D

Appendix 2  
Plant Identification Cards

*Hydrangea quercifolia*  
Oakleaf hydrangea

[insert image here]

SHRUB 6'-8' Ht.

ZONES: 5 - 9

SUN-Pt. SHADE WATER: MEDIUM

Bloom time: J F M A M J J A S O N D

*Itea virginica*  
Virginia sweetspire

[insert image here]

SHRUB 5' Ht.

ZONES: 5 - 9

Pt. SHADE WATER: HIGH

Bloom time: J F M A M J J A S O N D

*Lindera benzoin*  
Spicebush

[insert image here]

SHRUB 8' Ht.

ZONES: 4-9

SUN-SHADE WATER: MEDIUM

Bloom time: J F M A M J J A S O N D

*Vaccinium virgatum*  
Rabbiteye blueberry

[insert image here]

SHRUB 6' Ht.

ZONES: 7-9

SUN-Pt. SHADE WATER: MEDIUM

Bloom time: J F M A M J J A S O N D

*Ilex verticillata*  
Winterberry

[insert image here]

SHRUB 8' Ht.

ZONES: 3 - 9

SUN-SHADE WATER: HIGH

Bloom time: J F M A M J J A S O N D

*Asclepias incarnata*  
Swamp milkweed

[insert image here]

PERENNIAL 5' Ht.

ZONES: 3 - 9

Pt. SUN-SUN WATER: MED-HIGH

Bloom time: J F M A M J J A S O N D



*Symphoricarpos georgianum*  
Georgia aster

[insert image here]

Pt. SUN-SUN WATER: LOW-MED

Bloom time: J F M A M J J A S O N D

PERENNIAL 3' Ht.

ZONES: 3-9

*Callicarpa americana*  
American beautyberry

[insert image here]

Pt. SHADE WATER: LOW

Bloom time: J F M A M J J A S O N D

SHRUB 5' Ht.

ZONES: 7-11

*Aesclepias tuberosa*  
Butterfly milkweed

[insert image here]

SUN WATER: LOW-MED

Bloom time: J F M A M J J A S O N D

PERENNIAL 2' Ht.

ZONES: 3-9

*Baptisia alba*  
White wild indigo

[insert image here]

Pt. SUN - SUN WATER: LOW-MED

Bloom time: J F M A M J J A S O N D

PERENNIAL 3' Ht.

ZONES: 4-9

*Eryngium yuccifolium*  
Rattlesnake master

[insert image here]

SUN WATER: LOW-MED

Bloom time: J F M A M J J A S O N D

PERENNIAL 3' Ht.

ZONES: 4-9

*Vaccinium virgatum*  
Rabbit-eye blueberry

[insert image here]

SUN-Pt. SHADE WATER: MEDIUM

Bloom time: J F M A M J J A S O N D

SHRUB 6' Ht.

ZONES: 7-9

Appendix 2  
Plant Identification Cards

*Eutrochium purpureum*  
Joe-pye weed

[insert image here]

Pt.SUN-SUN WATER: LOW

Bloom time: J F M A M J J A S O N D

PERENNIAL 6' Ht.  
ZONES: 4-8

*Echinacea purpurea*  
Purple coneflower

[insert image here]

SUN WATER: LOW

Bloom time: J F M A M J J A S O N D

PERENNIAL 3' Ht.  
ZONES: 4-9

*Coreopsis lanceolata*  
Sand coreopsis

[insert image here]

SUN-Pt.SHADE WATER: MEDIUM

Bloom time: J F M A M J J A S O N D

PERENNIAL 2' Ht.  
ZONES: 3-8

*Rudbeckia fulgida*  
Black-eyed Susan

[insert image here]

SUN WATER: LOW-MED

Bloom time: J F M A M J J A S O N D

PERENNIAL 2'-3' Ht.  
ZONES: 3-9

*Clinopodium georgiana*  
Georgia calamint

[insert image here]

SUN-Pt.SHADE WATER: LOW

Bloom time: J F M A M J J A S O N D

SHRUB 2' Ht.  
ZONES: 7-9

*Solidago rugosa*  
Wrinkle-leaf goldenrod

[insert image here]

SUN WATER: MED-HIGH

Bloom time: J F M A M J J A S O N D

PERENNIAL 4' Ht.  
ZONES: 4-9

*Passiflora incarnata*  
Purple passionflower  
Maypop

[insert image here]

**SUN-Pt.SUN WATER:LOW-MED**

Bloom time: J F M A M J J A S O N D

VINE  
ZONES: 5-9

*Monarda fistulosa*  
Wild bergamot  
Bee balm

[insert image here]

**SUN-Pt.SUN WATER:LOW-MED**

Bloom time: J F M A M J J A S O N D

PERENNIAL 3' Ht.  
ZONES: 4-9

*Pycnanthemum tenuifolium*  
Narrowleaf mountain  
mint

[insert image here]

**SUN-Pt.SUN WATER:LOW-MED**

Bloom time: J F M A M J J A S O N D

PERENNIAL 3' Ht.  
ZONES: 4-8

*Achillea millefolium*  
Yarrow

[insert image here]

**SUN-Pt.SUN WATER:LOW**

Bloom time: J F M A M J J A S O N D

GROUND COVER 1' Ht.  
ZONES: 3-9

*Phlox divaricata*  
Eastern blue phlox

[insert image here]

**Pt.SHADE WATER:MEDIUM**

Bloom time: J F M A M J J A S O N D

GROUND COVER 1' Ht.  
ZONES: 3-8

*Lonicera sempervirens*  
Coral honeysuckle

[insert image here]

**SUN-Pt.SUN WATER:MEDIUM**

Bloom time: J F M A M J J A S O N D

VINE  
ZONES: 4-9

Appendix 2  
Plant Identification Cards

**Hibiscus coccineus**  
Scarlet rosemallow

[insert image here]

**SUN-Pt.SUN**    **WATER:HIGH**

Bloom time: J A S O N D

Ht.: 5' Ht.    **PERENNIAL**

**ZONES: 6-10**

**Monarda fistulosa**  
Wild bergamot  
Bee balm

[insert image here]

**SUN-Pt.SUN**    **WATER:LOW-MED**

Bloom time: M J J A S O N D

Ht.: 3' Ht.    **PERENNIAL**

**ZONES: 4-9**

**Scientific name**  
Common name

[insert image here]

**SUN:**    **WATER:**

Bloom time: J F M A M J J A S O N D

Ht.:    **ZONES:**

**Scientific name**  
Common name

[insert image here]

**SUN:**    **WATER:**

Bloom time: J F M A M J J A S O N D

Ht.:    **ZONES:**

**Scientific name**  
Common name

[insert image here]

**SUN:**    **WATER:**

Bloom time: J F M A M J J A S O N D

Ht.:    **ZONES:**

**Scientific name**  
Common name

[insert image here]

**SUN:**    **WATER:**

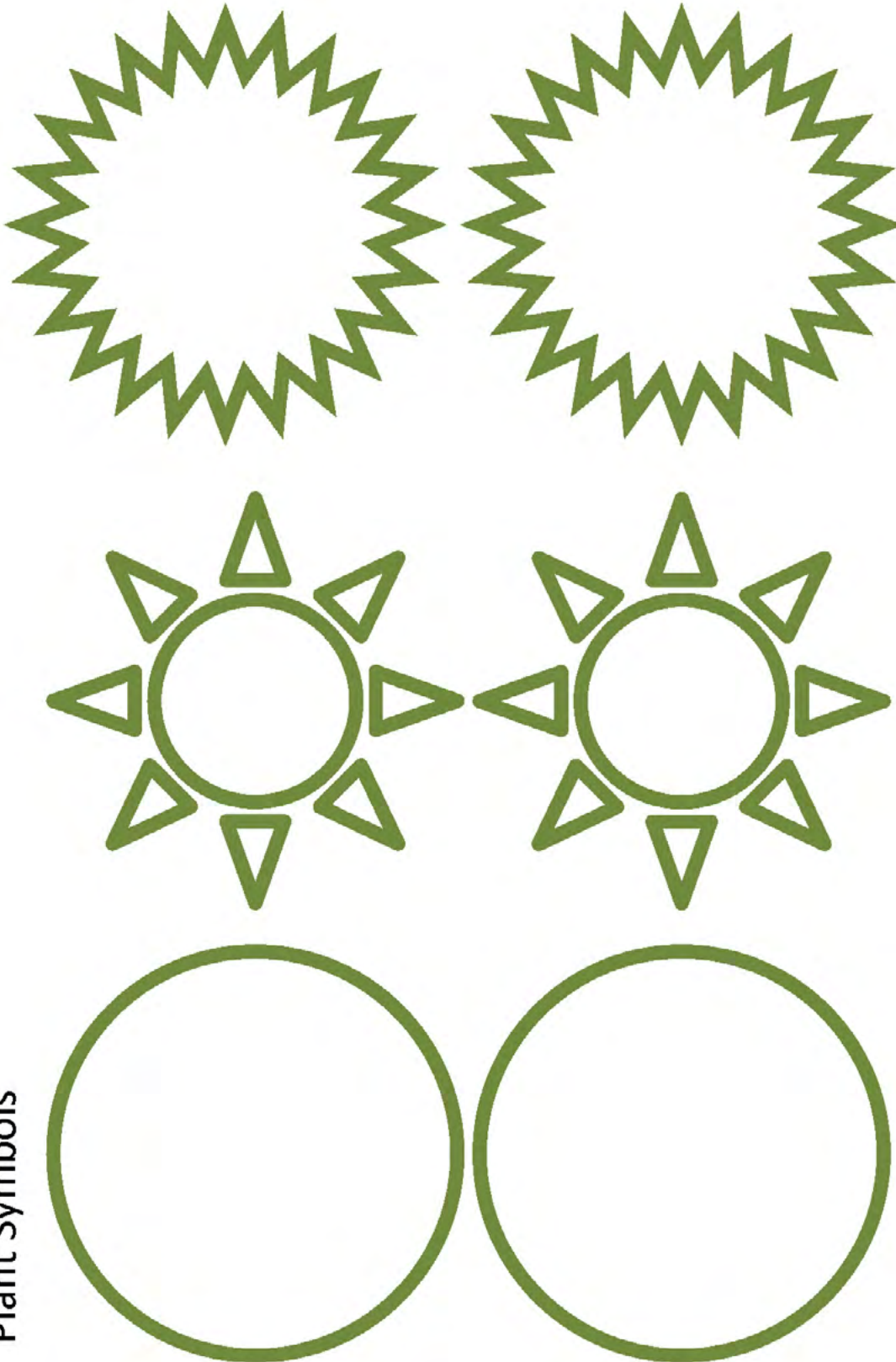
Bloom time: J F M A M J J A S O N D

Ht.:    **ZONES:**

## Appendix 3: Plant Symbol Templates

25' W

Plant Symbols



SCALE: 1" = 10'

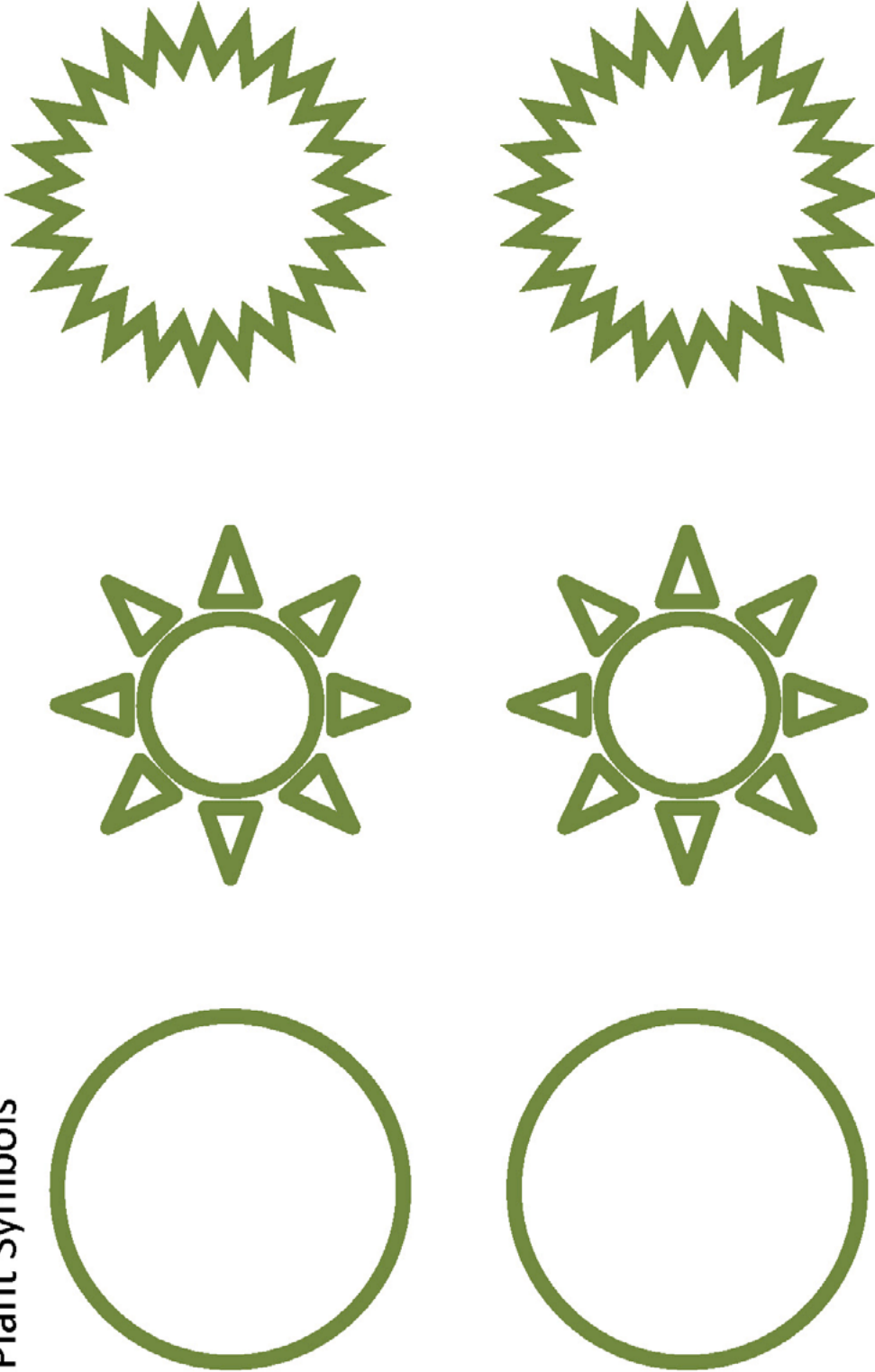
Use a different symbol for each plant species. Add color, patterns, or letters to these shapes to create additional plant symbols.

Label the plant name on the planting plan with a callout (arrows) or a legend.

For plants smaller than 2' spacing, draw an area bubble and list the desired plant.

Appendix 3  
Plant Symbol Templates

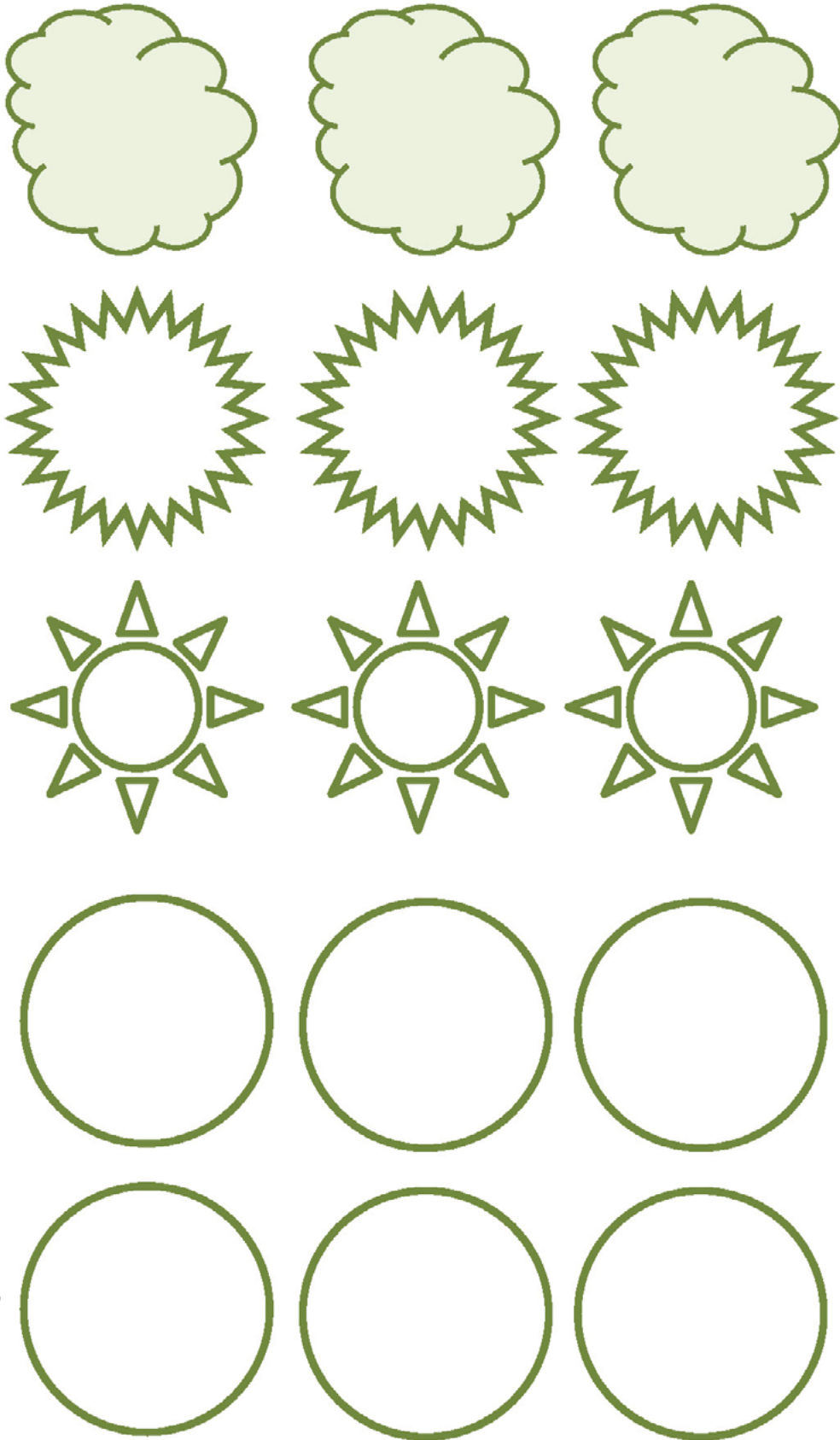
20' W  
Plant Symbols



SCALE: 1" = 10'  
Use a different symbol for each plant species. Add color, patterns, or letters to these shapes to create additional plant symbols.  
Label the plant name on the planting plan with a callout (arrows) or a legend.  
For plants smaller than 2' spacing, draw an area bubble and list the desired plant.

15' W

Plant Symbols



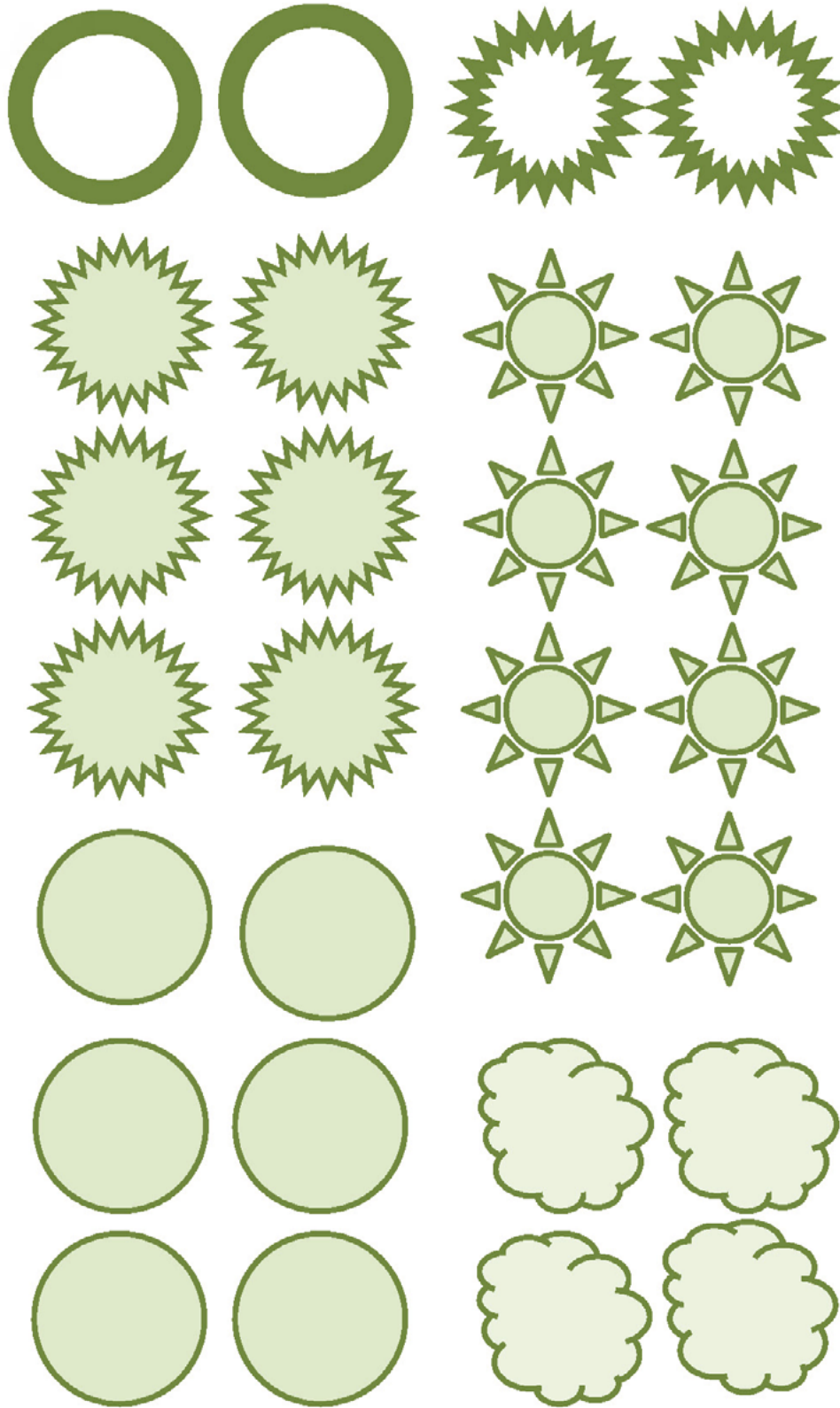
SCALE: 1" = 10'

Use a different symbol for each plant species. Add color, patterns, or letters to these shapes to create additional plant symbols.

Label the plant name on the planting plan with a callout (arrows) or a legend.

For plants smaller than 2' spacing, draw an area bubble and list the desired plant.

10' W  
Plant Symbols

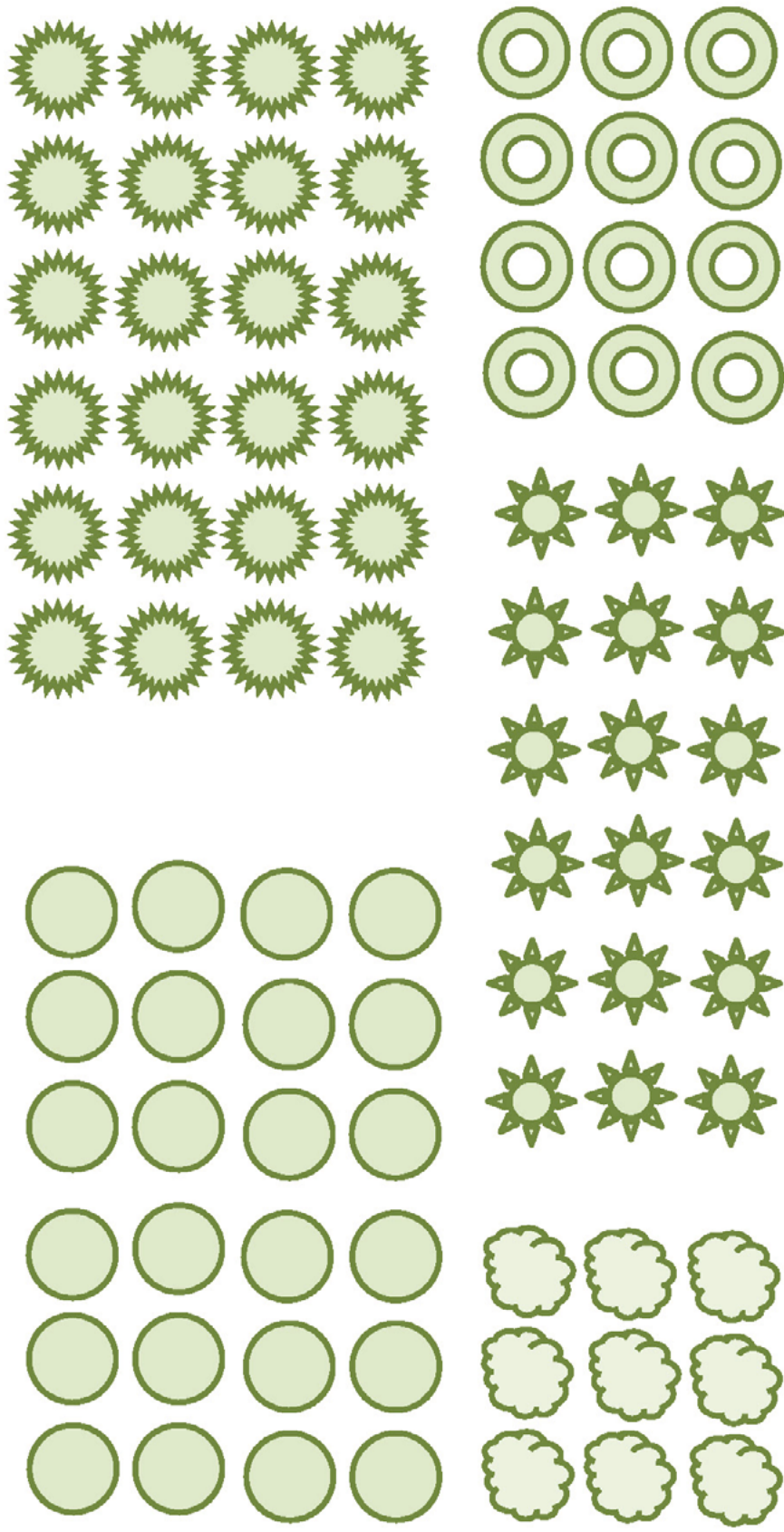


SCALE: 1" = 10'

Use a different symbol for each plant species. Add color, patterns, or letters to these shapes to create additional plant symbols. Label the plant name on the planting plan with a callout (arrows) or a legend. For plants smaller than 2' spacing, draw an area bubble and list the desired plant.



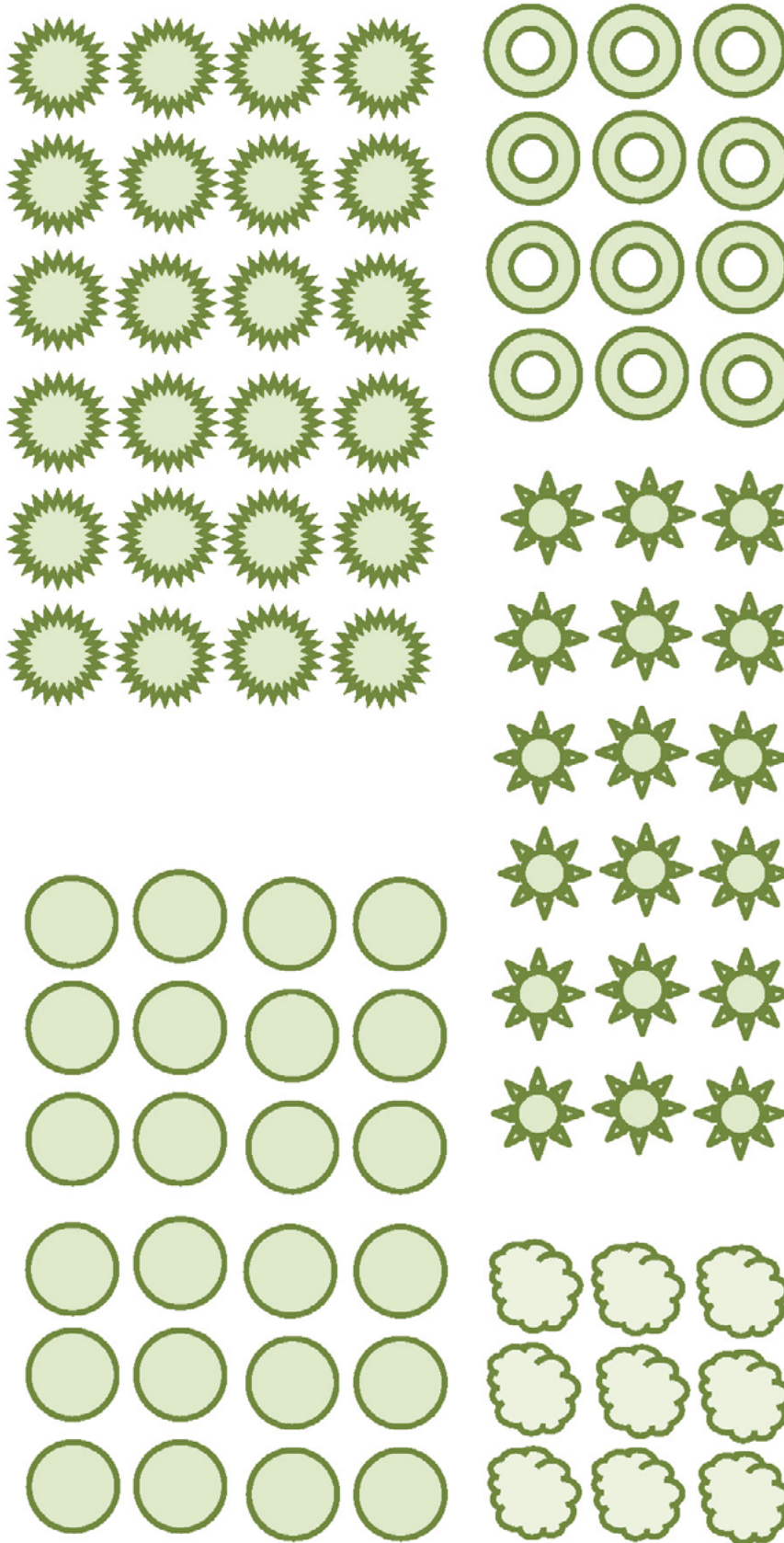
# 5' W Plant Symbols



SCALE: 1" = 10'  
Use a different symbol for each plant species. Add color, patterns, or letters to these shapes to create additional plant symbols.  
Label the plant name on the planting plan with a callout (arrows) or a legend.  
For plants smaller than 2' spacing, draw an area bubble and list the desired plant.

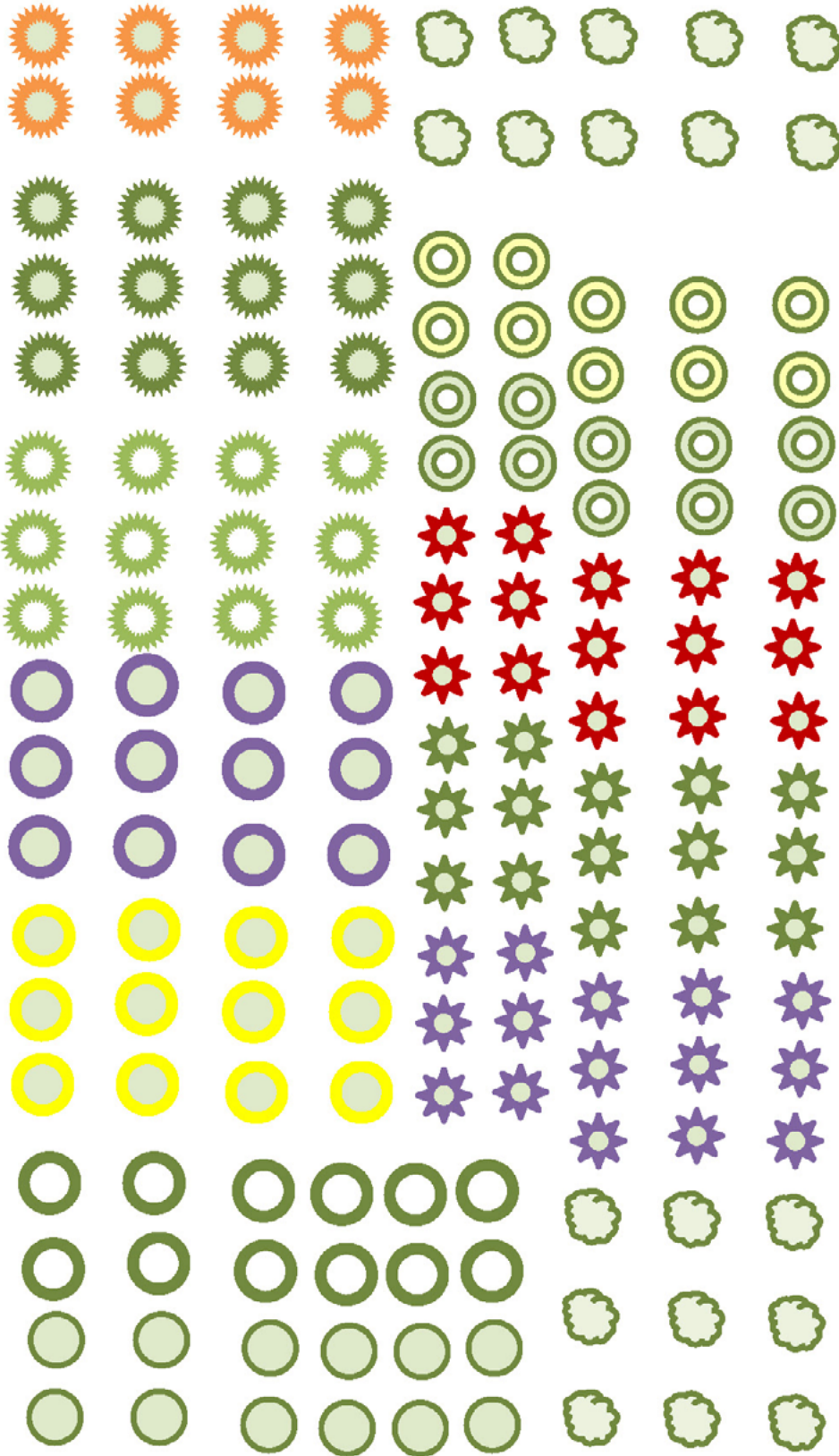
Appendix 3  
Plant Symbol Templates

5' W  
Plant Symbols



SCALE: 1" = 10'  
Use a different symbol for each plant species. Add color, patterns, or letters to these shapes to create additional plant symbols.  
Label the plant name on the planting plan with a callout (arrows) or a legend.  
For plants smaller than 2' spacing, draw an area bubble and list the desired plant.

# 3' W Plant Symbols



SCALE: 1" = 10'

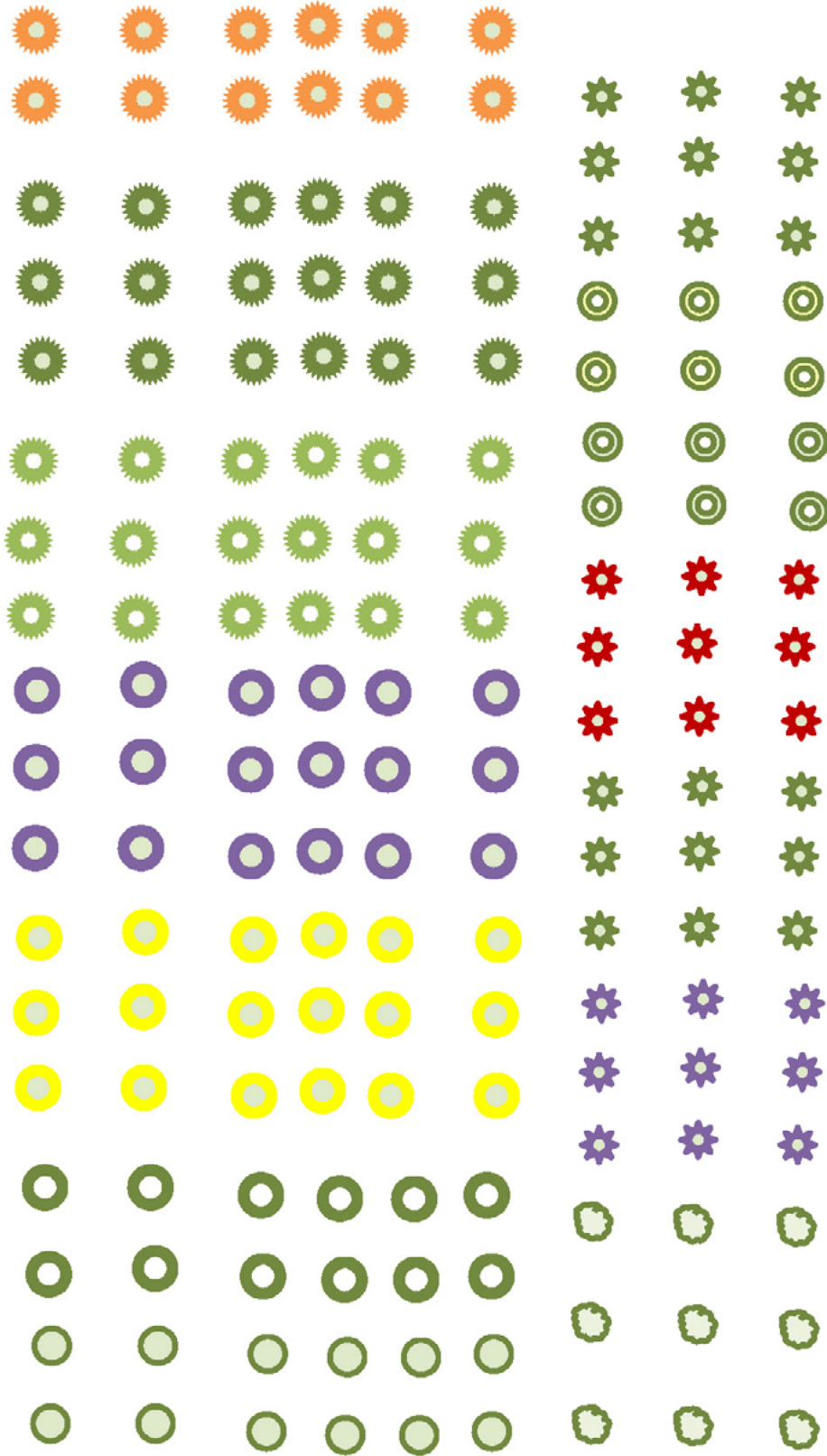
Use a different symbol for each plant species. Add color, patterns, or letters to these shapes to create additional plant symbols.

Label the plant name on the planting plan with a callout (arrows) or a legend.

For plants smaller than 2' spacing, draw an area bubble and list the desired plant.

Appendix 3  
Plant Symbol Templates

2' W  
Plant Symbols



SCALE: 1" = 10'

Use a different symbol for each plant species. Add color, patterns, or letters to these shapes to create additional plant symbols.

Label the plant name on the planting plan with a callout (arrows) or a legend.

For plants smaller than 2' spacing, draw an area bubble and list the desired plant.

The permalink for this UGA Extension publication is [extension.uga.edu/publications/detail.html?number=B1570-1](https://extension.uga.edu/publications/detail.html?number=B1570-1)

---

**Bulletin 1570-1 (Appendix Only)**

**February 2024**

---

Published by the University of Georgia in cooperation with Fort Valley State University, the U.S. Department of Agriculture, and counties of the state. For more information, contact your local UGA Cooperative Extension office. *The University of Georgia College of Agricultural and Environmental Sciences (working cooperatively with Fort Valley State University, the U.S. Department of Agriculture, and the counties of Georgia) offers its educational programs, assistance, and materials to all people without regard to race, color, religion, sex, national origin, disability, gender identity, sexual orientation or protected veteran status and is an Equal Opportunity, Affirmative Action organization.*

